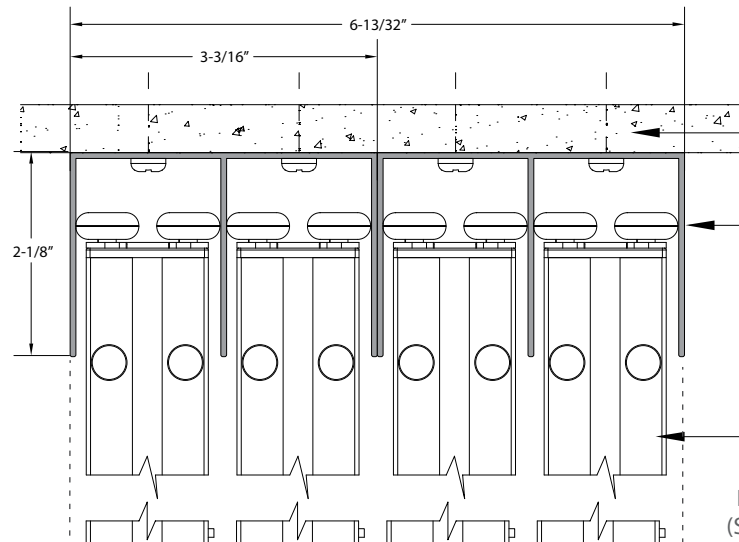


**Header Detail at half scale**  
Quad Upper Track



**Header/Blocking**

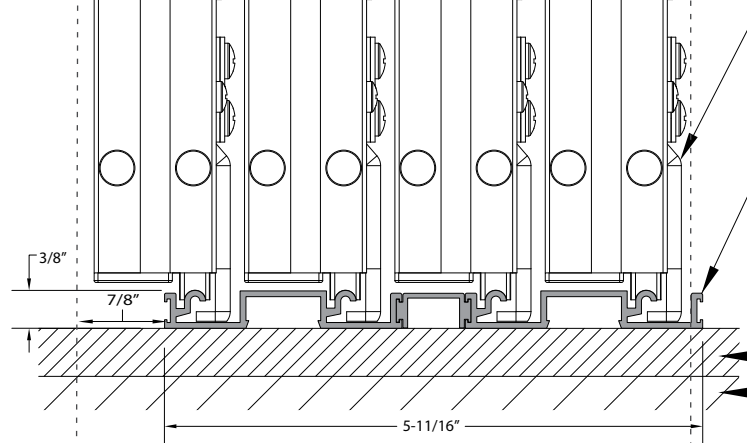
**Quad Upper Track:**  
(2) Double Tracks to make Quad Track. Secure to header using screws - Screws to be determined by header material. (See suggested screw types)

**Aluminium Frame Panel(s):**  
Various finishes available

FRONT (Side A)

BACK (Side B)

**Sill Detail Opt. 1 at half scale**  
Quad "Standard" Bottom Track

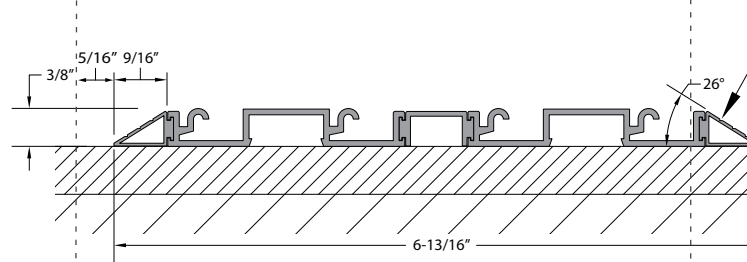


**Patented 'Wheel-to-Track' Locking Mechanism:**  
Concealed by wheel covers - to be installed after all adjustments have been made to panel(s).

**Quad 'Smart Track' (Patent Pending):**  
(2) Double Bottom Tracks + (1) Connector. Secure to finished flooring using clear silicone (not provided).

**Finished Flooring**  
**Sub Flooring**

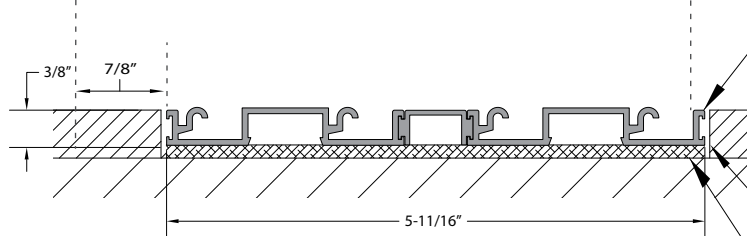
**Sill Detail Opt. 2 at half scale**  
Quad "Ramped" Bottom Track



**Quad Ramped Bottom 'Smart Track' - ADA Compliant (Patent Pending):**  
(2) Double Bottom Tracks + (1) Connector + (2) Ramps. Secure to finished flooring using clear silicone (not provided).

**Finished Flooring**  
**Sub Flooring**

**Sill Detail Opt. 3 at half scale**  
Quad "Recessed" Bottom Track



**Quad Recessed Bottom 'Smart Track' - ADA Compliant (Patent Pending):**  
(2) Double Bottom Tracks + (1) Connector. Secure to shim using clear silicone (not provided).

**Finished Flooring**  
**Sub Flooring**

**Channel:** recommended to be at least 1/8" wider than track to allow for tolerance.

**Shim:** Shim height to be determined by finished floor height. Track CANNOT be recessed more than 3/8" into the flooring.